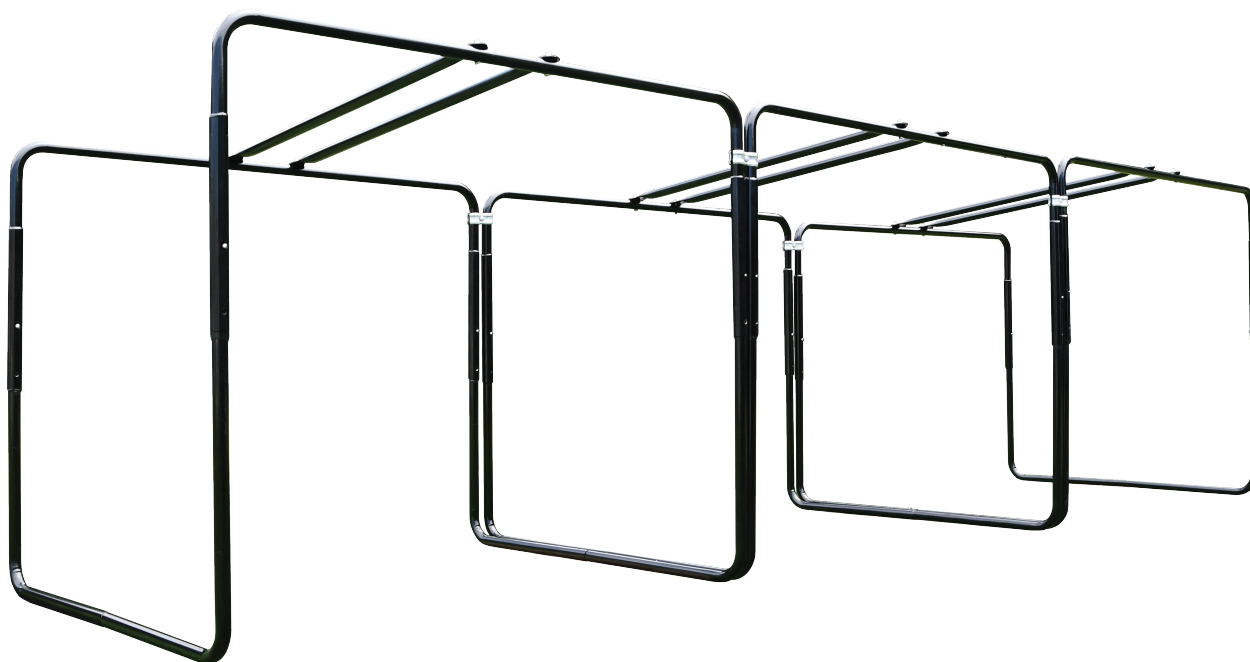




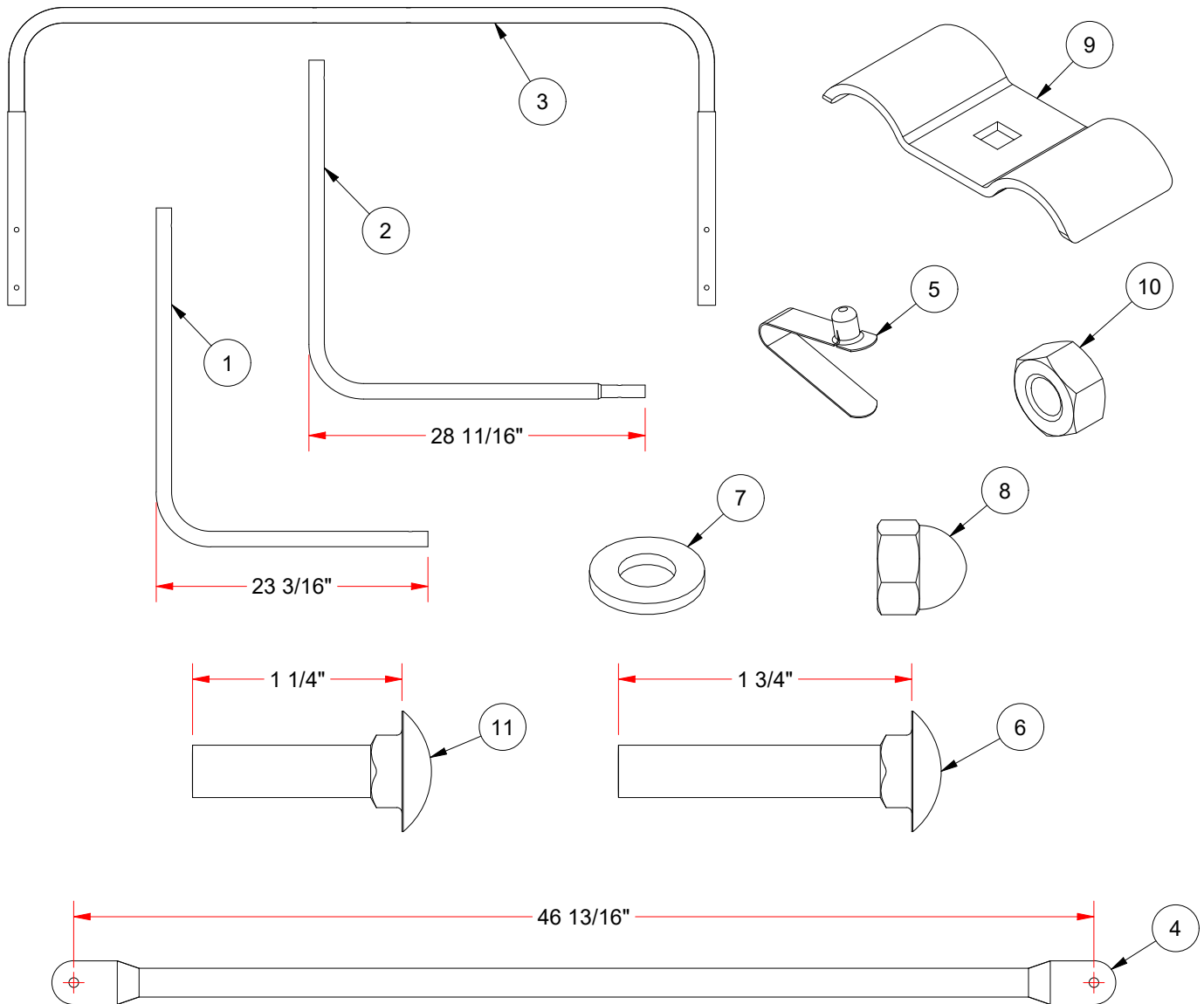
FBLMCH PROFESSIONAL LINE MEN CHUTE



Installation and Maintenance Manual

Call Jaypro Sports at 1-800-243-0533 during
regular business hours for technical support.
www.jayprosports.com

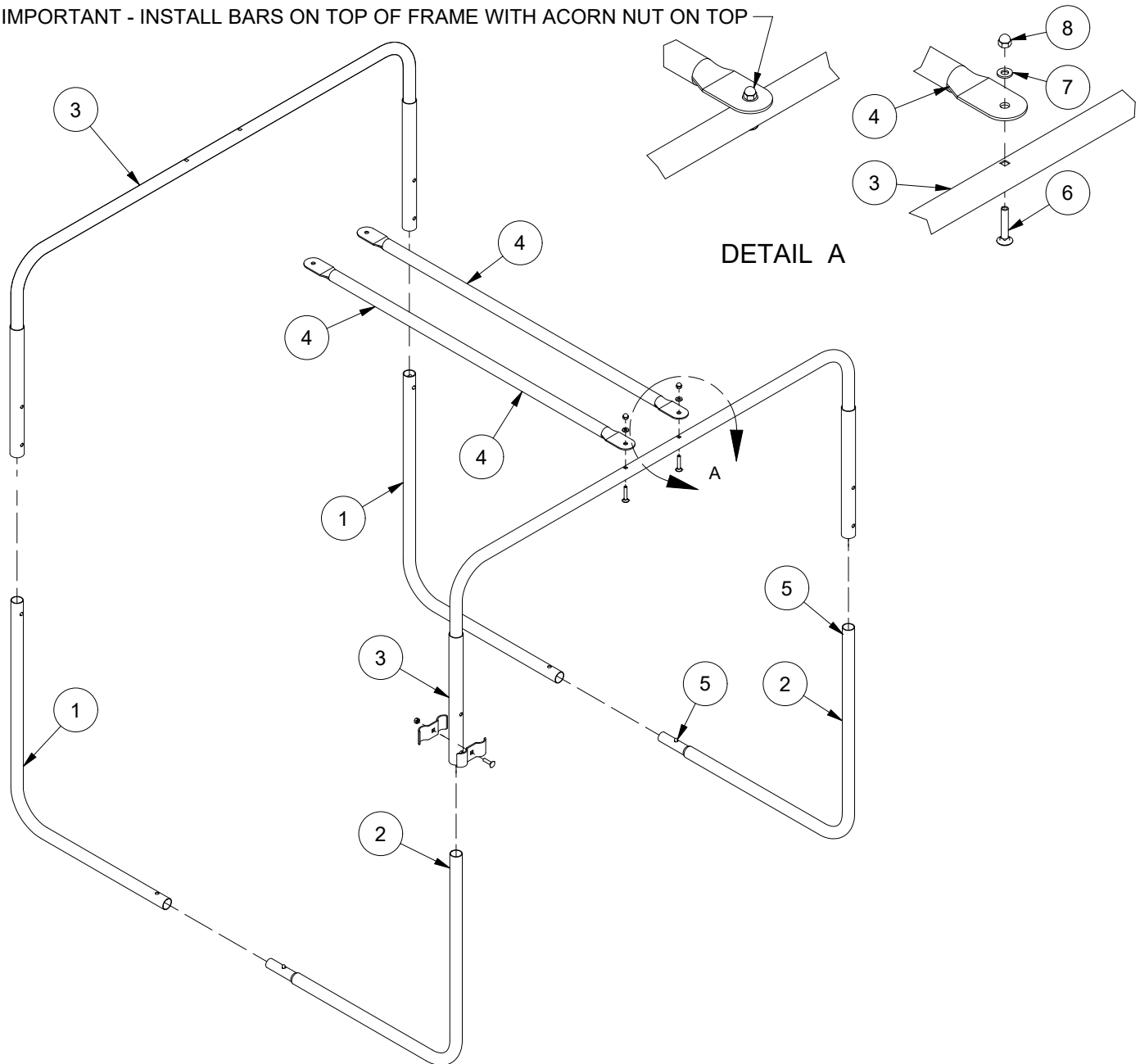
PROFESSIONAL LINE MEN CHUTE



ITEM	DESCRIPTION	QTY EACH
1	BOTTOM L-SHAPE FRAME	2
2	BOTTOM L-SHAPE w/ SWAGE	2
3	UPPER WELDMENT FRAME	2
4	CCP TOP X-BAR	2
5	VALCO SNAP PIN A-161	6
6	5/16-18 x 1-3/4 CARRIAGE BOLT-ZP	4
7	5/16 STD WASHER-ZP-GrNC	4
8	5/16-18 ACORN NUT - ZP - GrNC	4
9	1 5/16" ID DOUBLE PIPE CLAMP	4
10	5/16-18 HEX NUT GALV.	2
11	5/16-18 x 1 1/4 CARRIAGE BOLT GALV.	2

PROFESSIONAL LINE MEN CHUTE

IMPORTANT - INSTALL BARS ON TOP OF FRAME WITH ACORN NUT ON TOP



ITEM	DESCRIPTION	QTY EACH
1	BOTTOM L-SHAPE FRAME	2
2	BOTTOM L-SHAPE w/ SWAGE	2
3	UPPER WELDMENT FRAME	2
4	CCP TOP X-BAR	2
5	VALCO SNAP PIN A-161	6
6	5/16-18 x 1-3/4 CARRIAGE BOLT-ZP	4
7	5/16 STD WASHER-ZP-GrNC	4
8	5/16-18 ACORN NUT - ZP - GrNC	4
9	1 5/16" ID DOUBLE PIPE CLAMP	4
10	5/16-18 HEX NUT GALV.	2
11	5/16-18 x 1 1/4 CARRIAGE BOLT GALV.	2

PLEASE NOTE:

1) FOR SAFE OPERATION AND CONTINUED HIGH PERFORMANCE FROM THIS EQUIPMENT, INSPECTION AND MAINTENANCE MUST BE PERFORMED BEFORE EACH USE.

2) USE OF THIS EQUIPMENT OTHER THAN INTENDED MAY BE HAZARDOUS.

3) ALTERATION OR MODIFICATION OF EQUIPMENT MAY BE HAZARDOUS. FOR REPAIR OR REPLACEMENT, PLEASE CALL YOUR DEALER.



FBLMCH

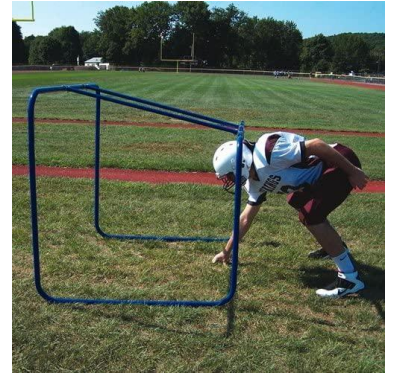
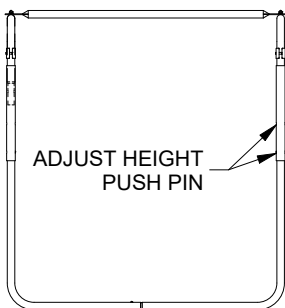
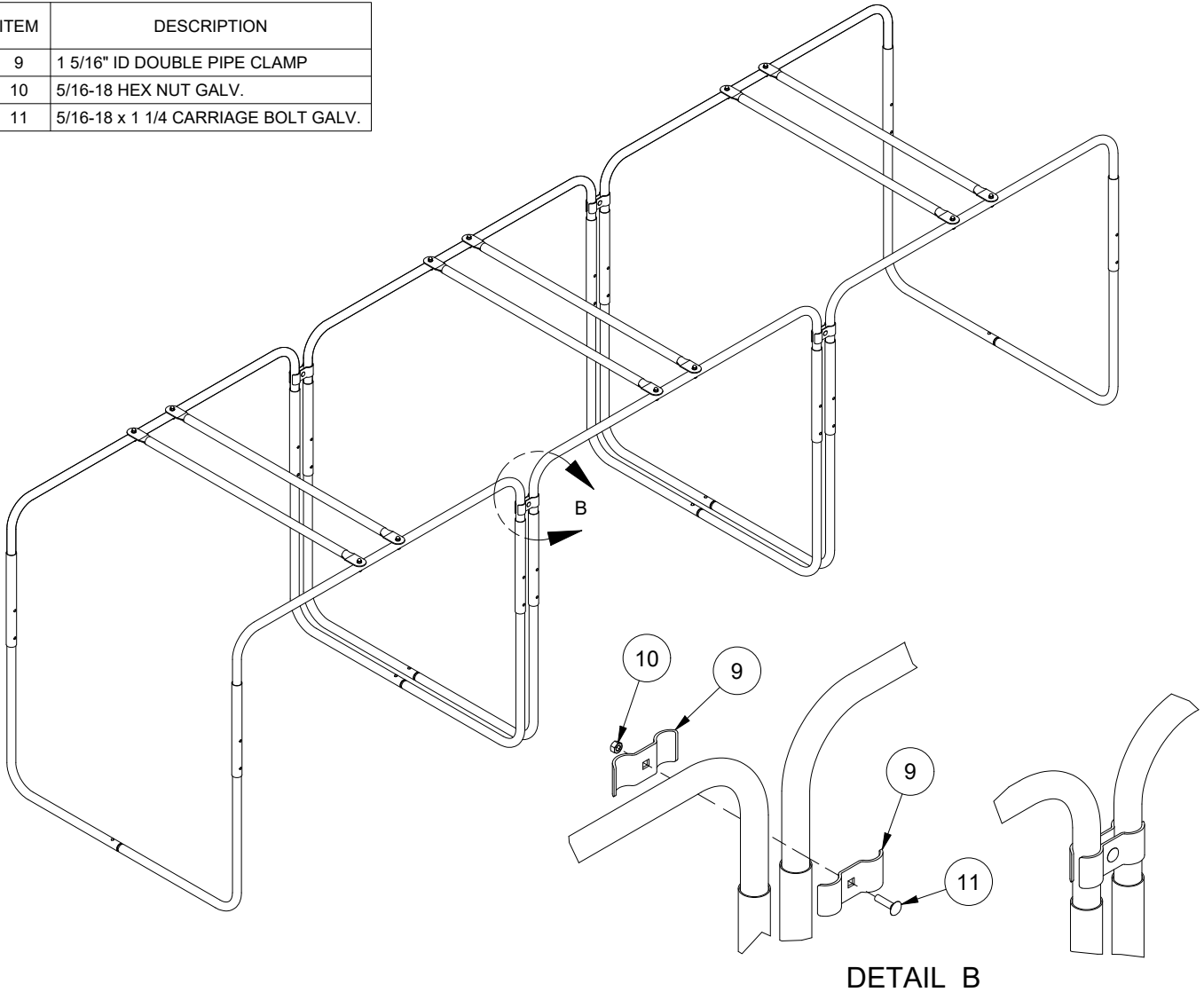
www.jayprosports.com / (800) 243-0533 / 976 Hartford Tpke, Waterford, CT 06385 USA

SUBJECT TO CHANGES IN DESIGN AND MANUFACTURING
© COPYRIGHT 2024 JAYPRO SPORTS, LLC. ALL RIGHTS RESERVED

Sheet 3 of 4

PROFESSIONAL LINE MEN CHUTE

ITEM	DESCRIPTION
9	1 5/16" ID DOUBLE PIPE CLAMP
10	5/16-18 HEX NUT GALV.
11	5/16-18 x 1 1/4 CARRIAGE BOLT GALV.



FBLMCH

www.jayprosports.com / (800) 243-0533 / 976 Hartford Tpke, Waterford, CT 06385 USA

SUBJECT TO CHANGES IN DESIGN AND MANUFACTURING
© COPYRIGHT 2024 JAYPRO SPORTS, LLC. ALL RIGHTS RESERVED

Sheet 4 of 4